

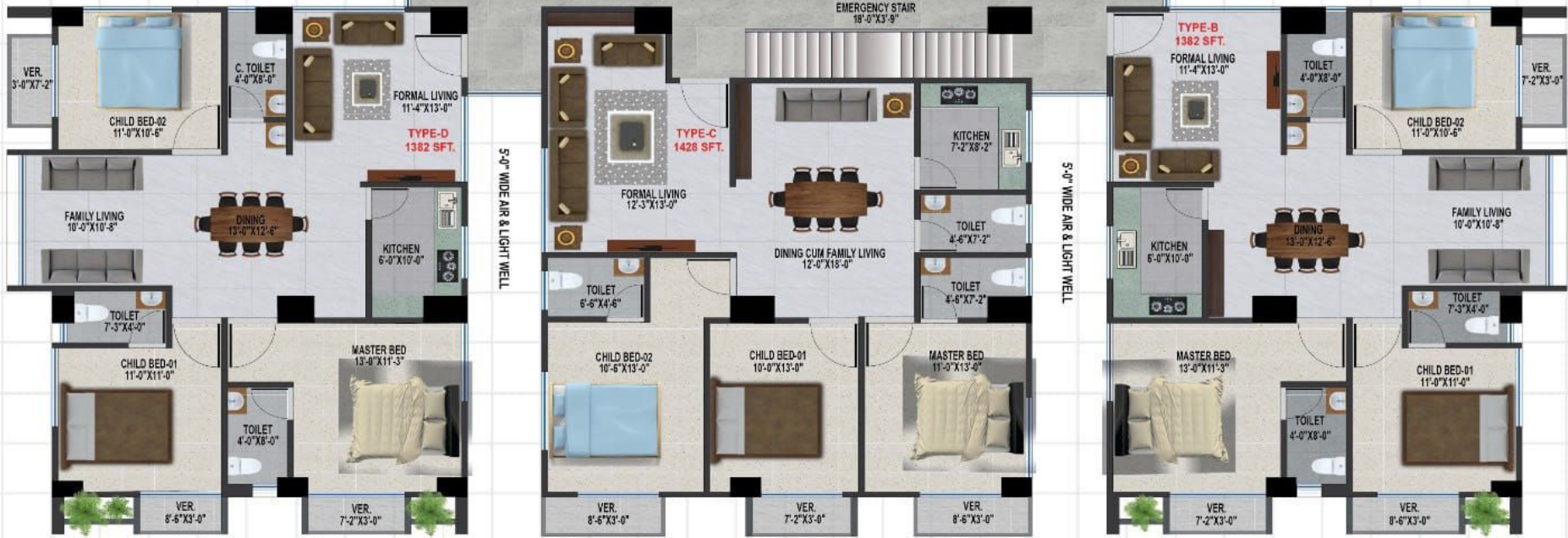
Royal Crown

Navana Gardenia (Near Savar Cantonment)
Kuturia, Ashulia, Savar, Dhaka.





5'-0" WIDE AIR & LIGHT WELL 5'-0" CLEAR CORRIDOR 5'-0" WIDE AIR & LIGHT WELL



TYPICAL FLOOR PLAN





About Us...

Welcome to DSEC Limited. We have started our journey with a team of experts in the real state sector. We ensure construction of best quality home for our honorable customers. All levels of work are closely monitored by our construction and management team. Architectural designs are also created by the renowned consultants.

Project Name : *Royal Crown*

Location : Navana Gardenia, Kutruria
Ashulia, Savar, Dhaka.
Land Area : 8712 Sft. /20 Dec.
Building Height : B+G+14 Floor.
Apartment Size : 1314/1382/1428 Sft.
Total Apartment : 70 Nos.
Total Car Parking : 35 Nos.
Work Start (Exp.) : Dec. 2024, Insha Allah
Hand Over : July 2028, Insha Allah
Construction & Consultant : DSEC Limited

PROJECT AT A GLANCE



FLOOR PLAN TYPE-B & D

Special Features

- High-magnitude earthquake tolerant and smart fire safety residential building.
- All time electricity & stand by generator service.
- Large cargo lift & passenger Lift.
- All time pure water supply from our own underground water pump.
- Super shop.
- ATM Booth
- Prayer Hall
- Pharmacy
- Library
- Community Hall
- Play ground for children
- Separate Gym for ladies & gents
- Well decorated roof top garden
- Walk way for jogging
- Bar-B-Q zone
- Gents parlor/Saloon
- Laundry shop



FLOOR PLAN TYPE-A & E



FLOOR PLAN TYPE-C



Corporate Office:
 B-34, RS Tower (3rd Floor), Savar Bazar Bus Stand, Savar, Dhaka.
 Cell: 01712-255049, 01716-042673, 01718-183254.

Hotline ☎ +88 01716-982623, +88 01732-566612 ✉ royalcrown.dsecold@gmail.com